

# UPDATING TLS ENCRYPTION TO USE TLS 1.2

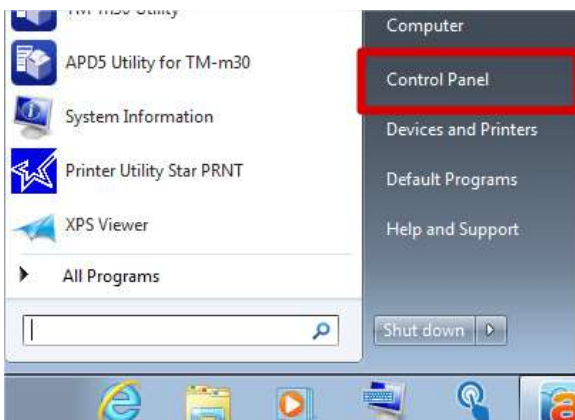
This process will require each machine running PointOS to be updated to 5.5996 or higher, the Use TLS 1.2 selected within the Internet Options, and PointOS will need to be restarted after completion.

## UPDATING TLS

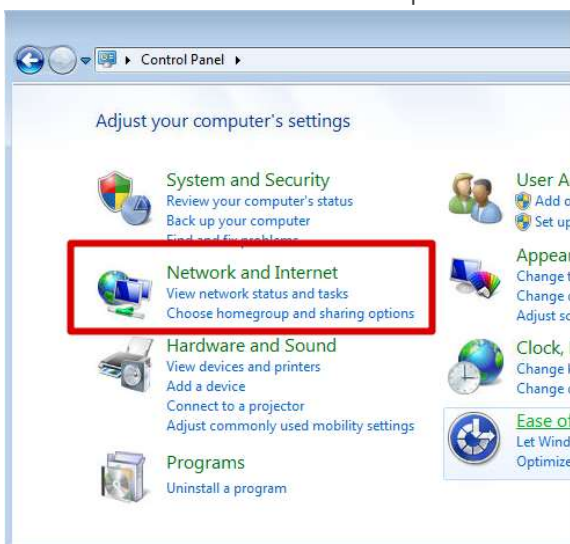
### 1. Open the Internet Options

#### Windows® 7

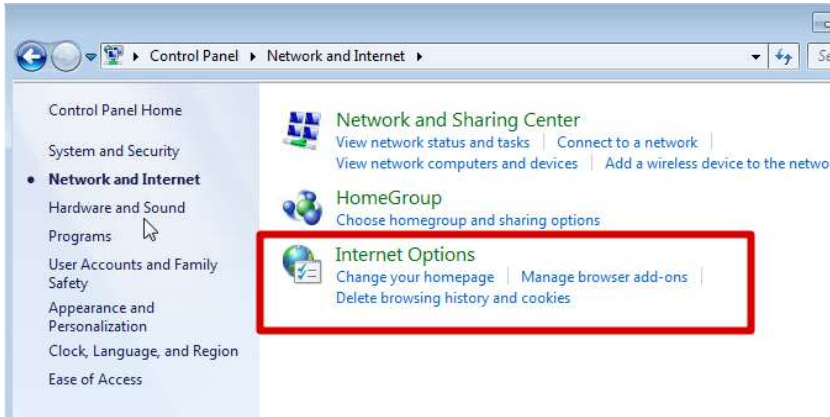
1. From the machines desktop open the **Start Menu**
2. Select the **Control Panel**



3. Now select the Network and Internet option

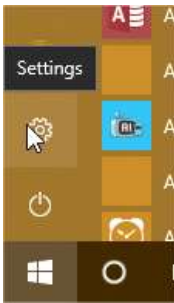


4. Once the **Network and Internet** menu has opened, select **Internet Options**

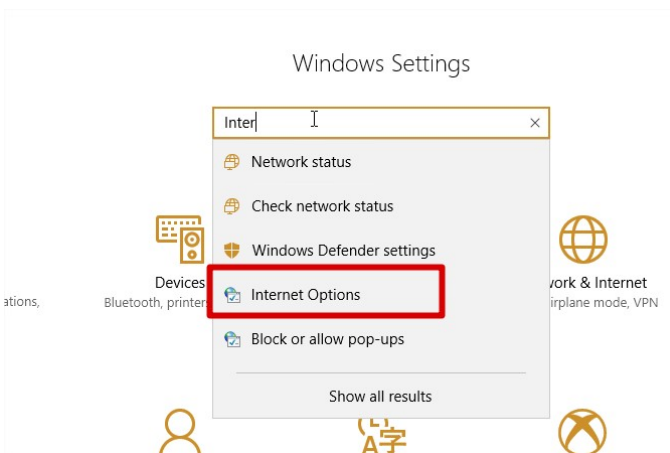


## Windows® 10

1. Open the Start Menu and select the Settings Icon



2. Once the **Windows Settings** window opens, type **Internet Options** into the search box



3. Hit Enter to open the **Internet Options**

## 2. Setting Internet Options to Use TLS 1.2

1. Once you have opened the **Internet Options** window, select the **Advanced** tab
2. On the **Advanced** tab, scroll all the way down to the bottom and verify that **Use TLS 1.0**, **Use TLS 1.1**, and **Use TLS 1.2** are selected.
3. Click **Apply** and then **OK**.
4. Restart PointOS
5. Verify you are able to process CCs.

